



BRADY BENCH

SKU: MUMOTI-402-Brady Bench

Brady is one of the first places on Earth that the exploitation, treatment and use of minerals began. The entire historical, social, cultural and political evolution of the island was closely associated with the exploitation of minerals. Brady is a mid-century styled bench, upholstery in black cotton velvet with feet structure in polished brass, which turn this stool into a modern furniture piece.

WIDTH: 120 cm | 47.2"

DEPTH: 40 cm | 15.7"

HEIGHT: 48 cm | 18.9"

Upholstery: Black Cotton Velvet

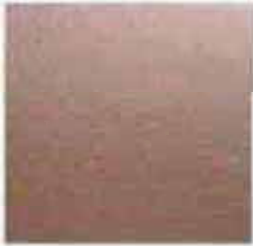
Legs: Polished Brass



METALS



Lacquered Steel



Painted Metal



Polished Brass



Stainless Steel



Polished Copper



Brushed Brass



Oxidized Brass

VELLANA DOUBLE WIDTH VELVET



Composition: 100% PL

Width: 300 cm

Weight: 1230 gr/ml

Martindale: 150.000 CC

Pilling: 5

Lightfastness: > 5

FR: Treatment available in narrow with and lamination BS5852 SOURCE 0&1 + CRIB 5 + EN1021 SOURCE 1&2 + IMO8.

USE



WASHING CONDITIONS



STAIN RESISTANT VELVET WITH WATER REPELLENT / P FR



01 Ivory



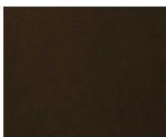
02 Sand



03 Beige



04 Taupe



05 Chocolate



06 Curry



07 Pure Yellow



08 Golden Olive



09 Dark Green



10 Storm Blue



11 Aqua Marine



12 Capri Blue



13 Light Gray



14 Lavender



15 Ash Rose



16 Deep Bordeaux



17 Rubi



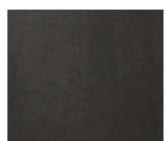
18 Black



19 Navy Blue



20 Horizon Blue



21 Steel Gray



22 Dark Taupe



23 Ash Gray

Width: 140 (+/- 2cm)

Weight: 420 gr/ml

Lightfastness: 4

Pilling: 4/5

Martindale: 100,000 CC

Shrinkage: +/-2%

Obs.: FR treatment available upon request